



# COMPANY PROFILE 2023

شركة أيزوتيك الصناعية ش.م.م  
**ISOTECH CO.**  
Aluminum & Glass






Rel. 3.0723

# COMPANY PROFILE

## 2022

## TABLE OF CONTENTS

TITLE	SECTION	PAGE
Document Information	-	A-02
Profile	A	A-03
Introduction		A-04
About Us (+Mission /Vision /Values)		A-05
Features (Quality Control/Safety/Technology)		A-09
Processes (Operation/Production/Installation)		A-11
Factory / Warehouse		A-14
Machinery		A-15
 C-02	Projects	B
 C-24	Products	C
 C-28	References	D
	Certifications	E
	Attachments	F
Contact Information	G	G-01

B-01

C-01

D-01

E-01

F-01

G-01

## Document Information

*This document, titled: “ISOTECH Co. Aluminum & Glass Company Profile 2023” and is prepared for the purpose of identifying “ISOTECH Co. Aluminum & Glass” services, products and projects as well as a general overview of the company’s structure and operation .*

*While every effort is made to insure accuracy of information and up-to-date data, any errors or missing information may not be intentional but incidental and will be edited, adjusted and corrected in upcoming released versions as required.*

## Copyright Notice

*This document and all of its contents are the sole property of **ISOTECH Co. Aluminum & Glass**. Technical specifications, photos, images, sketches and data sheets of supplier products are the property of the relevant supplier company or entity.*

*Any redistribution or reproduction in full or in part of this document is totally prohibited by national and international copyright laws. Violators will be prosecuted by local judicial laws and regulations.*

*This documentation is not transferable to any entity other than the entity sent to.*

## Privacy Policy

*Every care has been taken to maintain suppliers, clients and other entities privacy. If you find any part or section of this document that infringes your personal or corporate privacy; please contact us to correct, remove or amend.*

*Your personal or corporate contact information may be required to send you this document or communicate with you regarding this document. We respect your privacy and will not share or send your contact information to any third party.*

## Disclaimer

*All information has been checked in this very document carefully, where we, **ISOTECH Co. Aluminum & Glass**, may not be held liable for any errors in specifications, images, photos, technical sheets, dates, numbers, values or any type or sort of information that may cause any damage by misuse or misinterpretation of content.*

*Any abuse or misuse of any of the information or data, whether incidental or intentional may not hold **ISOTECH Co. Aluminum & Glass**, or its partners, suppliers, clients, consultants or any other entity liable or legally responsible in any form.*

## Document Release Note

*This document is prepared and designed by “web and media - Fadi M. Abul Husen” based on input data from ISOTECH CO. All designs, layouts, creative concepts and technical illustrations are custom designed and developed for **ISOTECH Co.** are the strict property of the latter. Any modifications, amendments or changes beyond the indicated release date and registered version number totally releases “web and media’s” direct and indirect responsibility. Any document missing “web and media” QC (Quality Control) mark and stamp may be incomplete or unrevised and releases “web and media’s” responsibility immediately.*

*For additional information, corrections or complaints, please contact **ISOTECH Co.** Marketing Department by E-Mail: [marketing@isotechlb.com](mailto:marketing@isotechlb.com) or Phone: **+961 5 361 393** or **+966 53 503 5839***

*In case of any design flaws, copywriting errors, misplaced data or any other layout issue, you may report to “web and media” via the email: [creative@webandmedia.com](mailto:creative@webandmedia.com).*

# PROFILE

## SECTION

# A





# Introduction

ISOTECH Co. Aluminum & Glass initially established in 2004 in Lebanon with a specific objective in mind by a dedicated, ambitious and devoted individual to later become a full fledged enterprise specialized in all Aluminum and Glass works.

From fabricating and installing the basics, such as doors, windows and panels, to engaging in new profiles for commercial shop fronts, all the way to production and delivery of turn-key glass and aluminum solutions for high rise buildings and exotic residential projects.

Covering all aspects and phases from design and fabrication to installation and delivery, ISOTECH proudly raked a multitude of project sizes in both the private and public sectors, handled specialized aluminum profiles technically, professionally and in an optimized timely manner.

## شركة أيزوتيك الصناعية ش.م.م



## Isotech in KSA

ISOTECH Co. recently expanded to become present in the Kingdom of Saudi Arabia thus bringing along the years of experience along with premium products & high manufacturing and assembly skills.

Already we have set base in Riyadh and established a factory fully equipped with state of the art new and advanced machinery.

Immediately, we can rush to your project and commence on production, deploying our highly skilled and experienced staff from architects, engineers, supervisors, technical staff to trained labor to cater for emerging projects in Riyadh area.

In addition, all our international European suppliers and especially the renowned Cortizo are backing us up with outstanding products to bring the best to the projects we engage in.

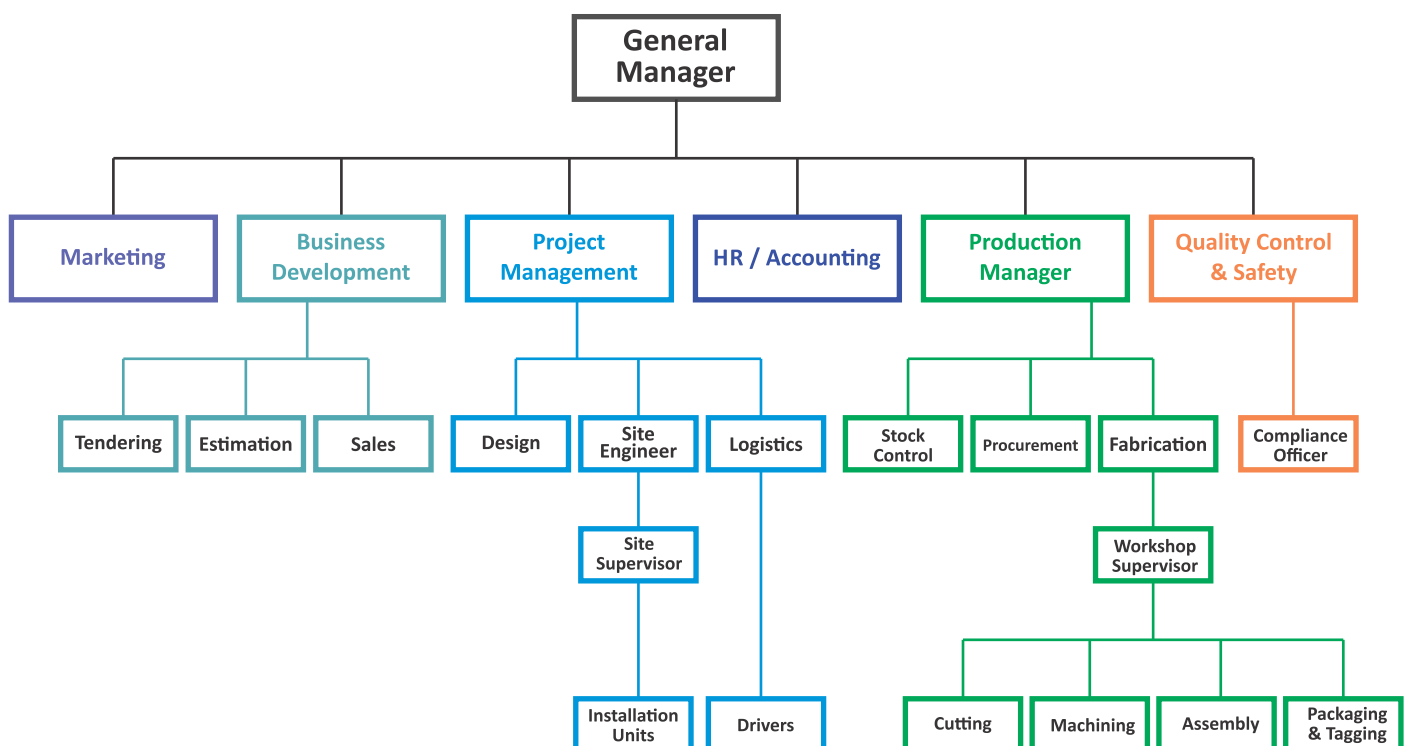
# About Us

Based on our wide experience in the aluminum industry and knowledge of the versatile profiles and accessories from multitude worldwide suppliers, in addition to market requirements and changing demands, we are determined to be a reliable source for all your aluminum and glass fabrication needs. By offering turn-key solutions, ISOTECH commences from design assistance in any project size and from the recommendation of the most suitable aluminum profile and glass specifications to supplying, manufacturing and installation of the end products.

Our priority is to insure the highest quality at all times while retaining cost-effective approaches. Since all of our suppliers are globally recognized, reliable and dedicated to quality, we focus our attention to the importance of quality as well as on constant encouragement to our staff to engage in frequent training programs on new emerging systems, machinery, design and manufacturing methods. Our investments extend further to management system to insure our continuous improvement.

At ISOTECH we merge our experience, know-how and business integrity with every technical ingredient of each project to deliver unmatched quality at an unprecedented scheduled deadline to guarantee long term reliability and confidence.

## STRUCTURE FLOW CHART



## Vision

To expand and spread out to new markets and territories, while setting a standard of excellence that raises the bar when it comes to customer service, industry knowledge and craftsmanship.

## Mission

- To maintain highest international standards in production, installation and maintenance and continuously seek innovative solutions in Production Methods and improve product lines.
- Safeguard our integrity and honesty as well as promoting our partnerships with our customers, suppliers, developers and consultants, both locally and internationally.
- Pursue the pinnacle commitment levels in every task we undertake for each business entity we deal with.

## Values

**Quality:** is one of the most important factors of success thus we sustain the strictest quality control.

**Reliability:** is achieved when our products perform as intended and function adequately for a long period of time in a any environment without failure

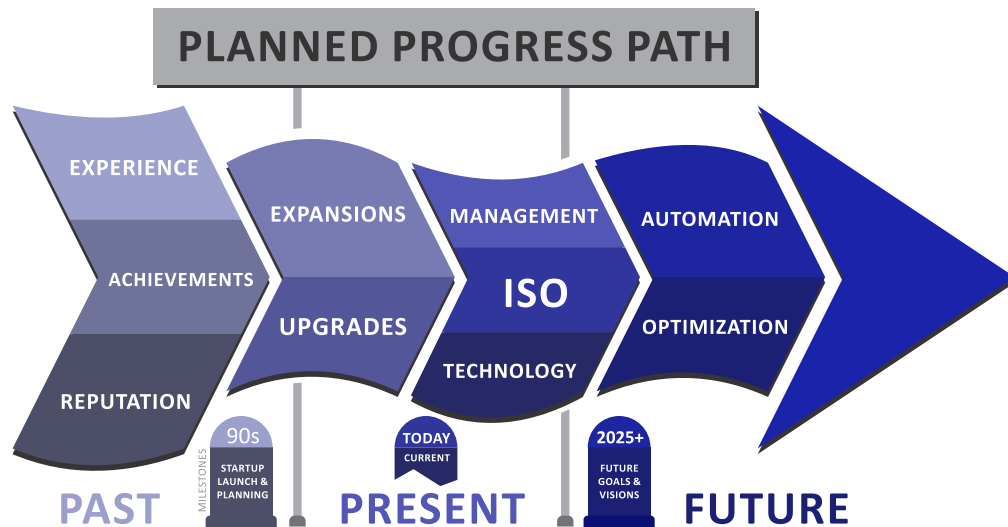
**Teamwork:** is an essential ingredient in management and production workflow.

**Communication:** is essential to well perform from management, all the way to accomplish advanced tasks relating to sales, services, and production.

**Consciousness & Responsibility:** in various aspects such as social, economic, and environmental.



# The Present & the Future



ISOTECH is an ever growing and expanding company, we consider that the last step of the staircase to success is sky high; our infinite ambition is defined as to excel and target ultimate perfection in every project we engage in. Our accomplishments have positioned us well in the market and gained us an outstanding reputation so far.

We contemplate this as just a small step in our long journey of achievements to come, where today we acquired several ISO certifications as well as several international acknowledgments, in addition to regular improvements to our factory and warehouse, machinery, tools and management techniques. In addition to regularly engaging in seminars, conferences and subscribing to training institutions.

## ISO Certification



ISO 9001:2015



ISO 14001:2015



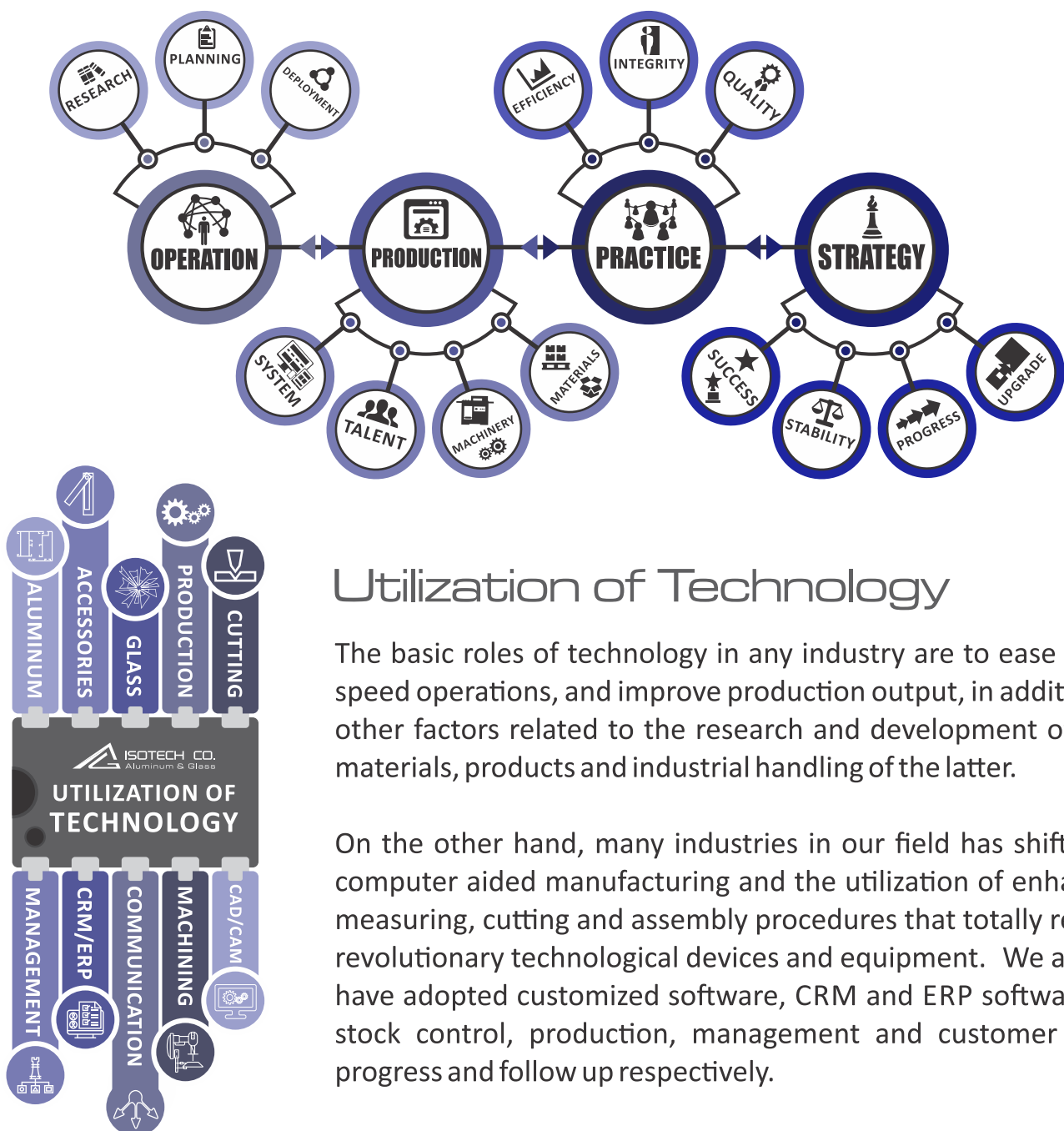
ISO 45001:2018



# Methodology, Growth & Capabilities

Research, effective planning and extended practice are essential procedures in the ongoing management process; from researching the acquisition of new raw materials, choice of machinery, adequate talent hunting, deploying manufacturing techniques, and all other methods relevant to, scheduling, budgeting, quality control, safety, logistics, environmental impacts, as well as strict compliance to national and international standards and regulations.

All these critical factors are taken into consideration and accounted for to procreate a long term business profile and discipline, including risk-mitigation factors from the identification, evaluation, and prioritization of risks followed by coordinated and economical application of resources to minimize, monitor, and control the probability or impact of unfortunate events.



## Utilization of Technology

The basic roles of technology in any industry are to ease work, speed operations, and improve production output, in addition to other factors related to the research and development of new materials, products and industrial handling of the latter.

On the other hand, many industries in our field has shifted to computer aided manufacturing and the utilization of enhanced measuring, cutting and assembly procedures that totally rely on revolutionary technological devices and equipment. We as well have adopted customized software, CRM and ERP software for stock control, production, management and customer work progress and follow up respectively.

# Quality Control

Quality control is an unbound ongoing process at ISOTECH that is initiated from the moment we decide to acquire raw materials from a specific supplier, all the way through the manufacturing process and way down finally to installation and delivery. Throughout the lifecycle of any fabricated product till it is delivered, each stage is checked and double checked to ensure a trustworthy, reliable and resilient output is received at an excellent condition by the end user.

Our ISO 9001:2015 has adopted the following policies and associated objectives as we believe in collective success and thus, each department periodically reviews its objectives and goals in order to continually improve overall performance.

- Assisting customers in determining their needs
- Delivering quality services in a timely manner
- Being cost effective
- Abiding by laws and regulations
- Continually improving the effectiveness of the quality management system



**Bureau Veritas Certification**

**ISOTECH CO**

ISOTECH BUILDING, MAIN STREET, GORNAYEL, BAABOA - LEBANON

Bureau Veritas Certification Holding SAS - UK Branch certifies that the Management System of the above organisation has been audited and found to be in accordance with the requirements of the management system standards detailed below

**ISO 9001:2015**

Scope of certification

DESIGN, FABRICATION, ASSEMBLY AND INSTALLATION OF ALUMINUM GLASS AND METAL WORKS

Original cycle start date: 10-06-2021

Expiry date of previous cycle: NA

Certification / Recertification Audit date: 15-05-2021

Certification / Recertification cycle start date: 10-06-2021

Subject to the continued satisfactory operation of the organization's Management System, this certificate expires on: 09-06-2024

Certificate No.: LB001902 Version: 1 Issue Date: 10-06-2021

*[Signature]*

Certification Body Address: 5th Floor, 66 Prescot Street, London, E1 8NG, United Kingdom  
Local Office: Bureau Veritas Liban SAL - Dedeyan Center 11th Floor - Dora - Lebanon

Further clarifications regarding the scope and validity of this certificate, and the applicability of the management system requirements, please call: 0333 3020400

UKAS MANAGEMENT SYSTEMS 0008

1/1

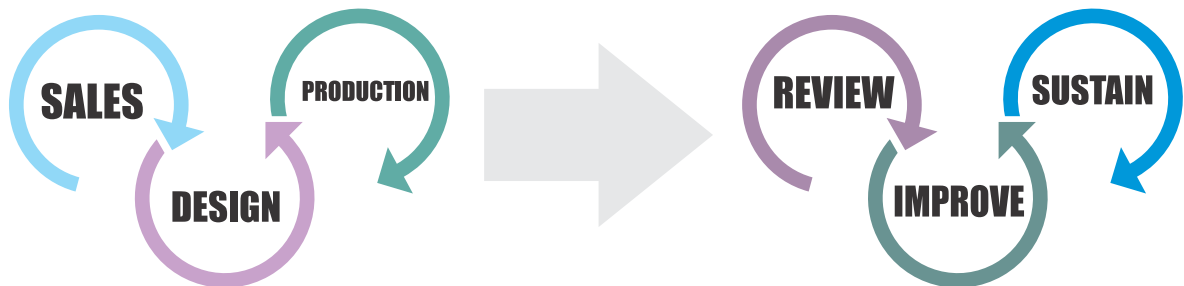
# Safety

Safety is a very intricate issue that we handle seriously at ISOTECH. We emphasize and encourage safety precautions and requirements and strive to enforce it at every stage of operation. Consequently, safety measures are applied and monitored throughout all operation phases, from warehouse to factory to transportation and installation without any compromise. We received The ISO 45001 - 2018 Certification for Occupational Health & Safety .

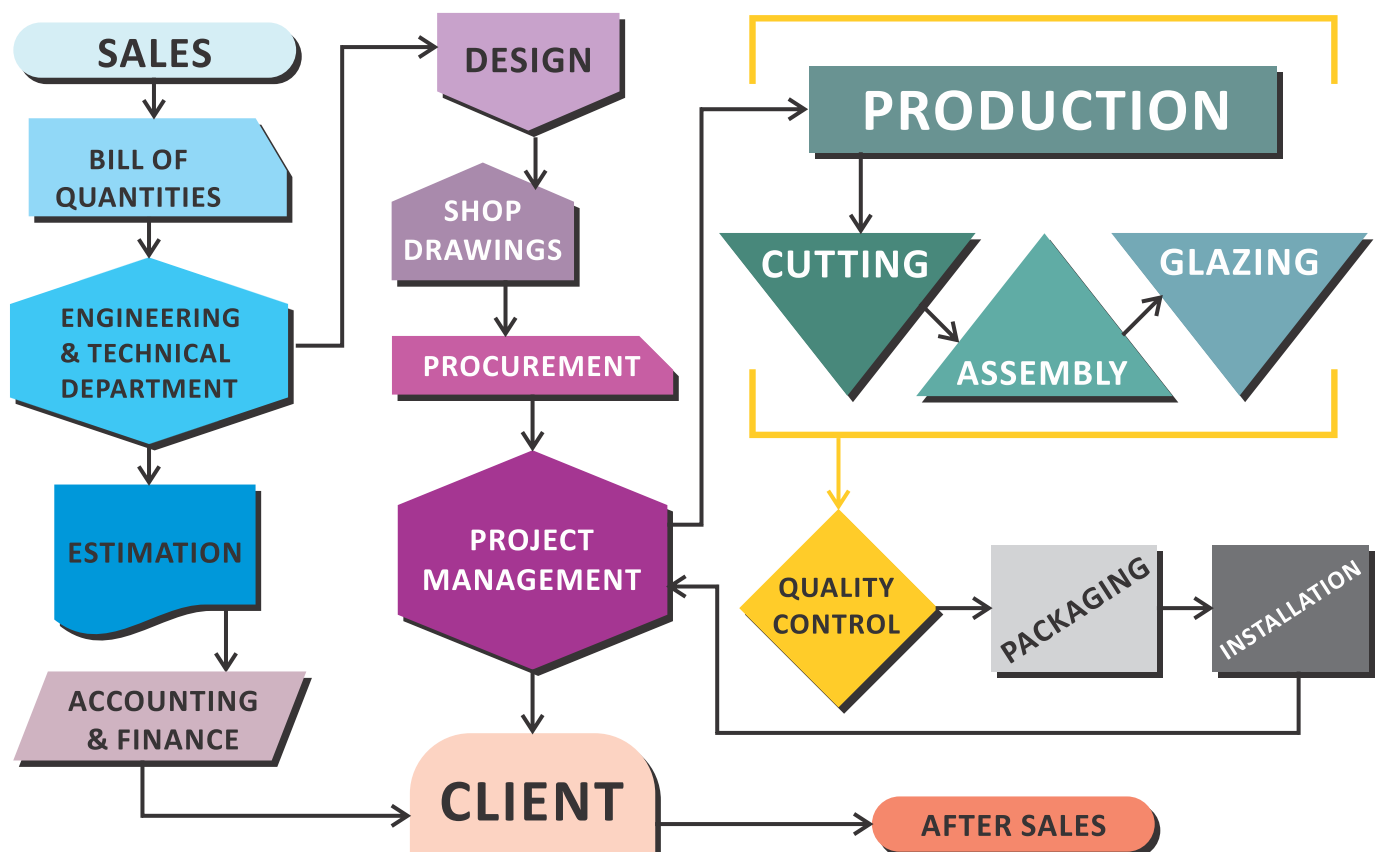


# Operational Process

A project is considered active the moment the sales contacts the client and determines the requirements, perform dimension measurements, or receive the project plans and hand over to the technical department engineers. During this phase the Bill of Quantities are generated and forwarded to the Estimation Unit, collectively with Top Management a quotation is created and released to be later sent to the respective client.



Once the client process and accepts the quotation the ball rolls to the Project Management Department's where in turn put together a detailed plan of action, time-line, and allocate tasks. Later, the Engineering & Design Department generates technical designs, shop drawings, and site plans in addition to essential material calculations needed by other departments such as procurement, production and installation whilst keeping Top Management updated and enlightened of the run activity.

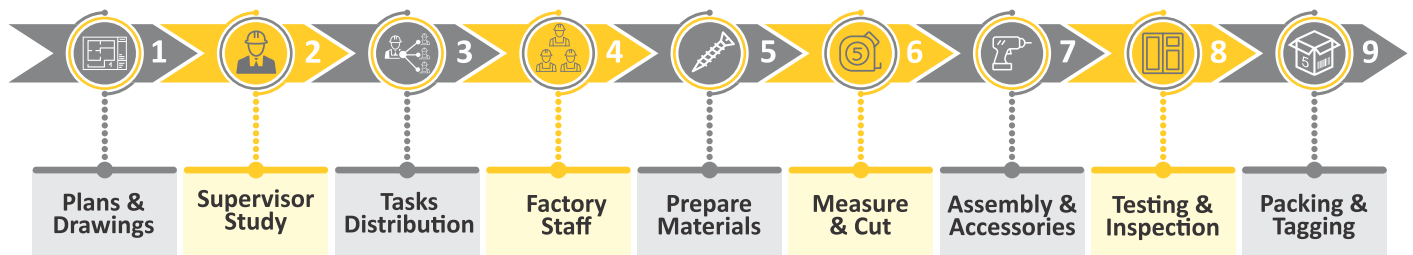




# Production Process

The Production process encompasses several sequential tasks to later proceed in a parallel simultaneous production after distribution of duties and operations.

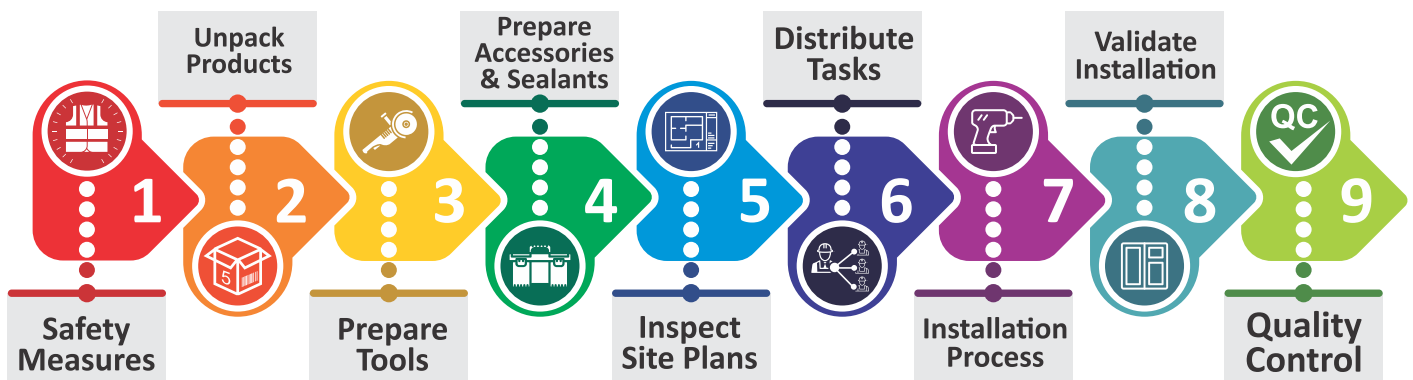
The production manager studies the plans, send orders to the warehouse to supply the required raw materials and accessories, instruct the production supervisors of the required which in turn coordinate and assign the work force to proceed with measurements, machinery setup, cutting, assembly and glazing to finally perform packaging, numbering and stacking.



# Installation & Delivery

The installation phase is almost the last phase that is meticulously planned and supervised by the Project Management Team thereafter to be executed by the on-site installation teams.

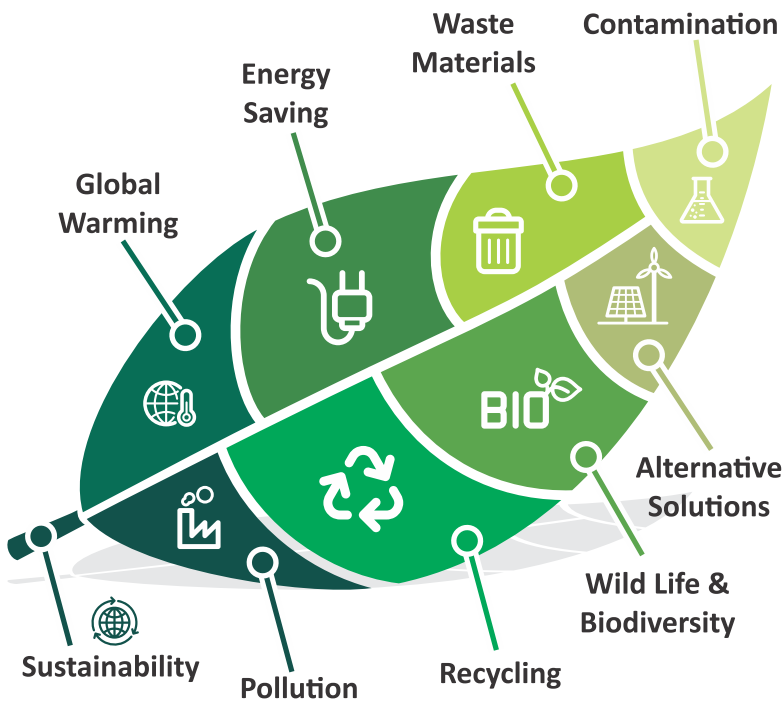
Each system, model, and item is clearly labeled, numbered and tagged with a matching reference in the plans. Accordingly, the installation teams are organized and well equipped with all required machinery, tools, equipment, etc. as well as safety harness to systematically proceed on the job.



# Environmental Concerns

At ISOTECH we strive to pursue most environmentally safe approaches within our reach and constantly seeking raw materials and production processes with the least ecological impacts. We are always concerned about the environment and tend to maintain most regulation and encourage more eco-friendly methods. From investing in power saving electrical equipment to selecting products and consumables that render less waste, less harmful emissions and less contaminants. We care for our neighborhood, country and planet alike.

The ISO 14001:2015 specifies the requirements for an environmental management system that ISOTECH can utilize to enhance its environmental performance.



**Bureau Veritas Certification**

**ISOTECH CO**

ISOTECH BUILDING, MAIN STREET, QORNATYEL, BAABDA - LEBANON

Bureau Veritas Certification Holding SAS - UK Branch certifies that the Management System of the above organisation has been audited and found to be in accordance with the requirements of the management system standards detailed below

**ISO 14001:2015**

Scope of certification

DESIGN, FABRICATION, ASSEMBLY AND INSTALLATION OF ALUMINUM GLASS AND METAL WORKS

Original cycle start date: 27-05-2022  
Expiry date of previous cycle: NA  
Certification / Recertification Audit date: 07-03-2022  
Certification / Recertification cycle start date: 27-05-2022  
Subject to the continued satisfactory operation of the organization's Management System, this certificate expires on: 26-05-2025

Certificate No.: LB002024 Version: 1 Issue date: 27-05-2022

Certification Body Address: 8th Floor, 64 Prescott Street, London, E1 8HG, United Kingdom  
Local Office: Bureau Veritas Liban SAS - Dodegani Center 9th Floor - Dora - Lebanon

Further specifications regarding the scope and validity of this certificate, and the applicability of the management system requirements, appear on the back of this certificate.

5/1



# Factory

The factory is a well ventilated and conditioned facility to sustain excellent working conditions and allow proper air flow for machinery. The distribution of machinery and work benches are carefully planned and distributed to maintain a linear flow of work activity and to avoid unnecessary interweaving motion of workers. In addition to the above, the factory has the proper high roof with ceiling cranes and truck access gates to allow moving in and out of raw materials and finished products respectively.



# Warehouse

The Warehouse area is spacious enough and each section is clearly tagged to quickly access the required materials, it is as well easily accessible by trucks to load and unload, yet highly secured and monitored by fire sensors and cameras around the clock, as well as equipped with automatic fire extinguishers and an advanced alarm system.





# Machinery

The production process at ISOTECH is balanced between semi-automated machinery and skilled labor to ensure flawless high quality production. Constant training of operators along with machine upgrades take place every once in a while along with regular introduction of new machinery. Nevertheless, our engineers regularly research new machinery and machine accessories (upgrades) to handle new profiles and contemporary architectural design requirements.



## DALI 70

CNC Machining Centre with 4 controlled axes

## ACP-CNC

CNC Cutting and Grooving for  
Aluminum Composite Panels



## Fom Blitz 60 Theta

Double-Headed Aluminum Saw





# Machinery

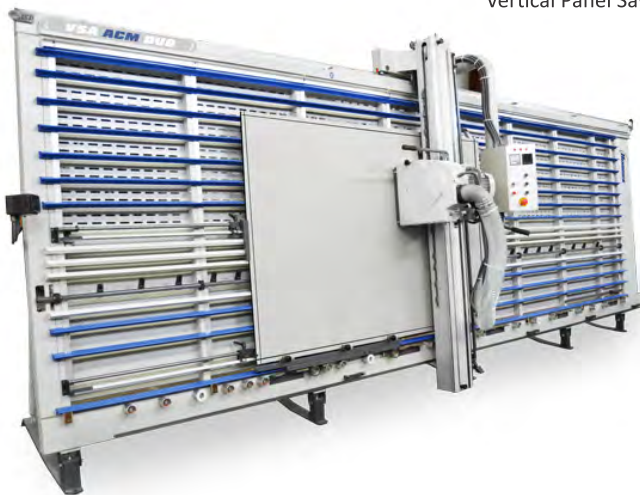
## BLITZ ALVA 500

Double Head Sawing Machine



## VSA ACM DUO (Vertical)

Vertical Panel Saw & Groover



## PBM

Profile Bending Machine



## BAIHA L

Corner Assembly Machine  
(Crimping Machine)



## CALCO

Electropneumatic  
Copy Router



## MATISSE

Electropneumatic  
Copy Router With  
Rotary-translation



## MISTRAL 26-26 A

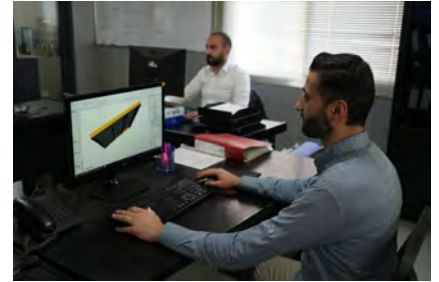
Variable Angle  
End-Milling Machine

# Staff

Every successful business gains an added value from the cumulative experience of the key personnel running the firm. This experience can be well defined as a primary asset in our scope of business.

ISOTECH constantly assesses each employee's performance, satisfaction, and feedback on regular basis in order to maintain a more productive and healthy work conditions. From time to time we implement local activities such as group training, step challenges, personal coaching, and inspirational in-house seminars.

Regarding recruitment it is an active task at ISOTECH to seek professional employees and skilled labor and encourage applicants with the adequate abilities and experience, with an open eye for leadership, teamwork, and communication potentials.



Managers



Engineers



Clerical



Supervisors



Workers

	Managers	Engineers	Clerical	Supervisors	Workers
1 Conferences	✓	✓	✗	✗	✗
2 Seminars	○	✓	✗	✗	✗
3 Workshops	✗	✗	○	✓	✗
4 Sessions (In-House)	—	○	✓	✓	✓
5 Training (In-House)	✗	—	○	✓	✓
6 Training (Outbound)	✗	✓	✗	✓	✗

— Not Applicable ✓ Yes ✗ No ○ Optional



# PROJECTS



## SECTION

# B





## Mondrian Tower

Ashrafieh - Beirut

Architect: Fouad Samara Architects

Consultant: APAVE

Developer: Alfa Tower

Contractor: DG Jones & Partners





## Al-Tayseer Hotel

Mecca - KSA

Architect: Fouad Samara Architects

Developer: AIMS Holding

Contractor: Wasamat Real Estate

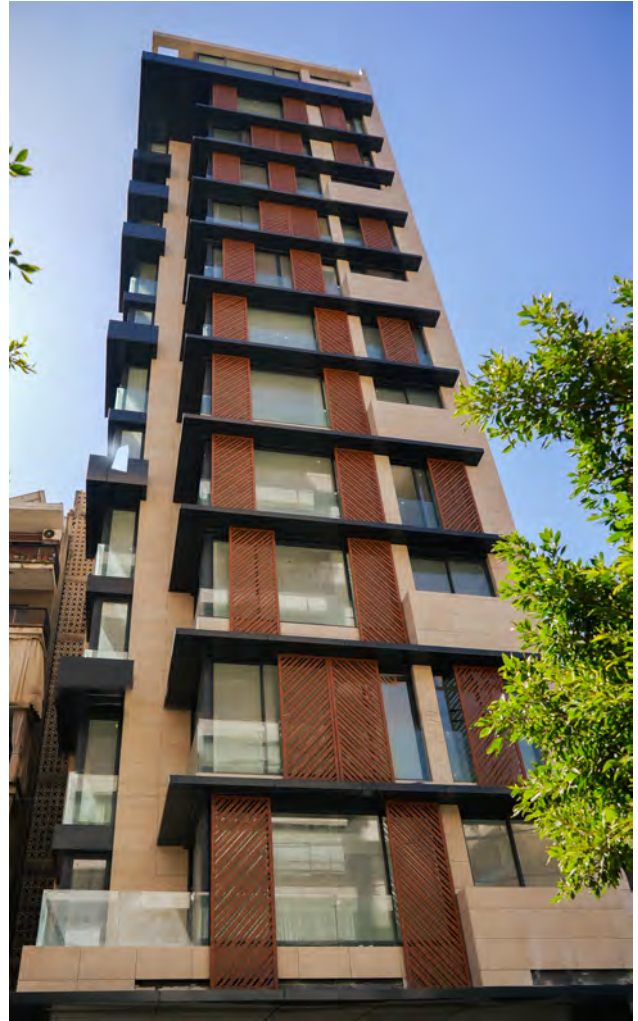




## Ashrafieh 456

Ashrafieh - Beirut

Architect: Stephanie Feghali Sawan Studio





## Modulofts L163

Ashrafieh - Beirut

Architect: Fouad Samara Architects / Consultant: APAVE





**Meshref Villa**  
Meshref - Chouf  
Architect: Joseph Joanny



**Al Hindi Villa**  
Wadi Boudai - Baalbak  
Architect: Hussien Abou Daher







## A Frames

Bikfaya - Metn  
Fouad Samara Architects







## Sultan Villa

Keifan- Kuwait

Contractor: MNA International







**Obeid Villa**  
Shnnanier - Kesrwan  
Architect: DAZ Architects



**Rizk Villa**  
Ashkout - Kesrwan  
Consultant: DG Jones & Partners



**Rajab Villa**  
Ghazze - Bekaa



**Moussi Villa**  
Anfeh - North  
Architect: Abdallah Al Massih







## Jawhary Villa

Aramoun - Aley  
Architect: Riad Abo Ghanam







**Qornayel 130**  
Qornayel - Baabda  
Architect: Jad Abi Fadel

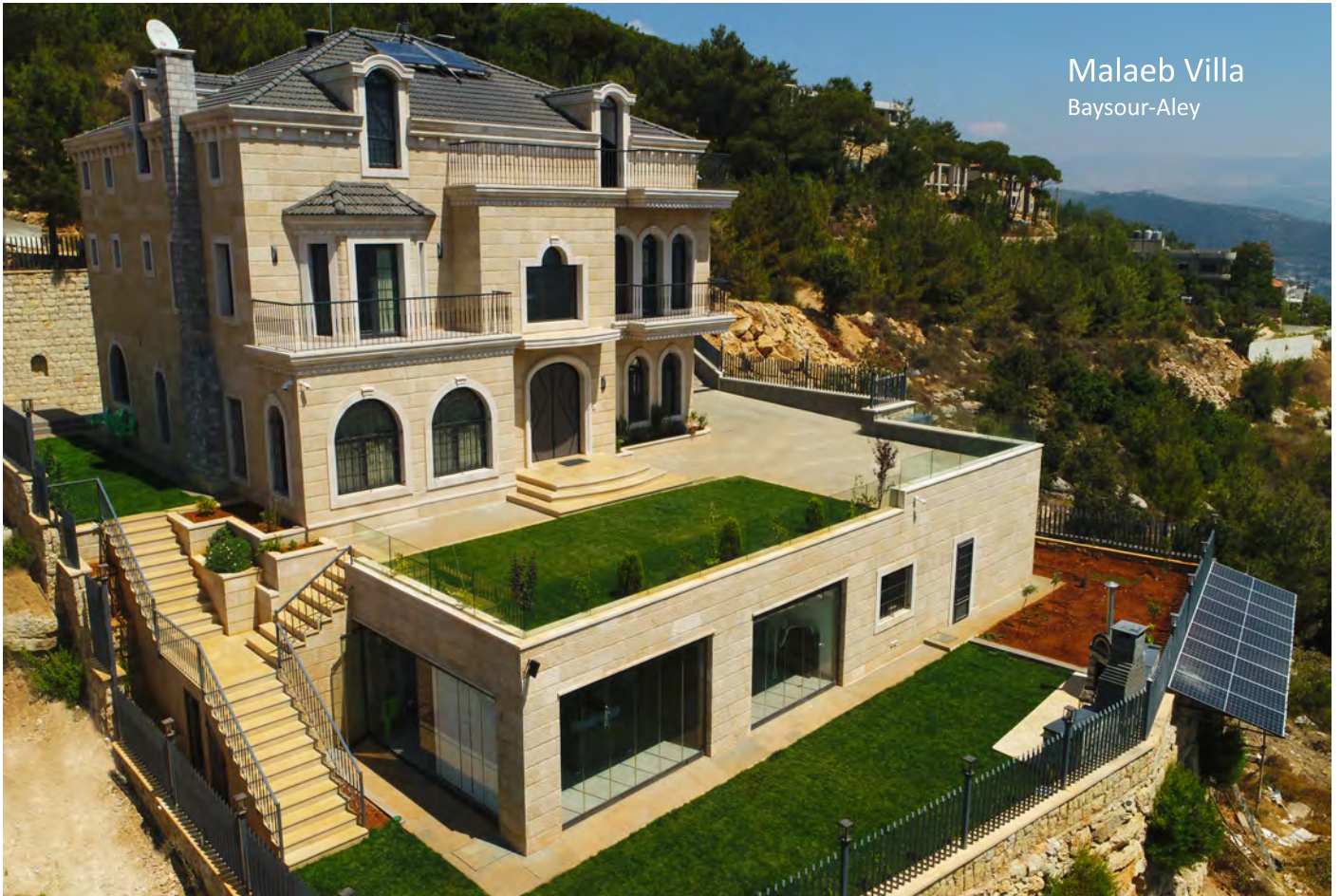


**Khoury Villa**  
Zahle - Bekaa  
Architect: Henry Franjeh Architects









Malaeb Villa  
Baysour-Aley



Shnanir 431 Villa  
Shnanir - kesrwen  
Architect: Wassim Kaddoum Architects



Moughrabi Villa  
Kfarselwan - Baabda



Oussama Daniel Villa  
Ras El Matn - Baabda





## Al Fahmi Villa

Badghan - Aley

Architect: Akram Shaya Architects



## Rabih Daniel Villa

Ras El Matn - Baabda





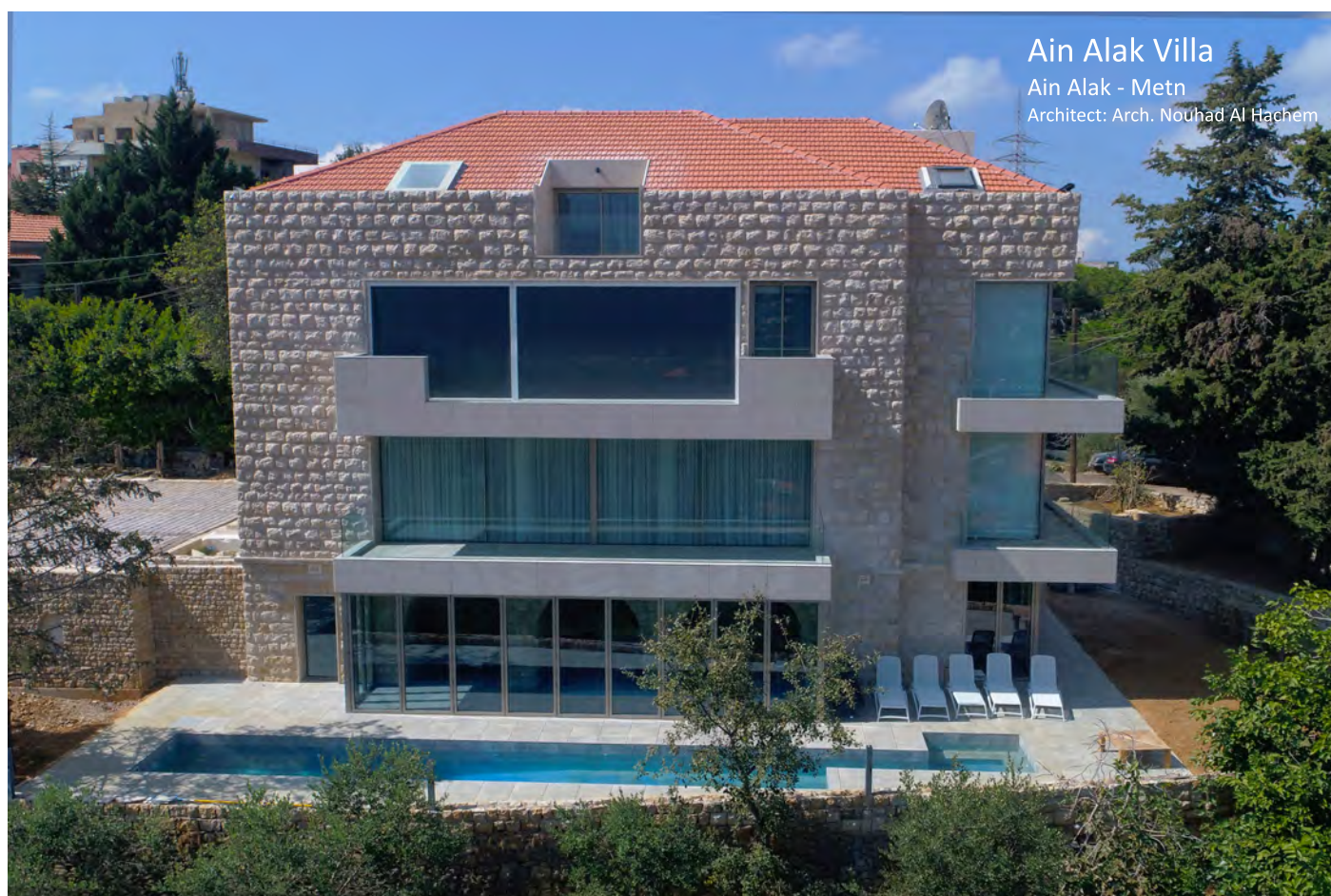
Sarkis Villa  
Shebanieh - Baabda



El Rifai Villa  
Bhamdoun - Aley









Khairallah Villa  
Bhamdoun - Aley



Al Nasr Villa  
Hammana - Baabda  
Contractor: Manaf Co.











## Hamra 1470

Hamra - Beirut

Contractor: MAC Engineering and Contracting



## Dbayeh 591

Dbayeh-Metn



## Bauchrieh 3584

Bauchrieh-Metn

Developer: Mr. Milad Abi Saad



## MRT Tower

Ashrafieh - Beirut

Contractor: Group 4 Engineering



## Kaslik 2489

Kaslik - Kesrwan

Contractor: MAC Engineering and Contracting



## Starbucks

Chtoura - Bekaa

Developer: Dareen Intl Co S.A.R.L

Contractor: MAC Engineering and Contracting







## Beirut City Center

Beirut

Developer: Majed Al-Futtain

Contractor: MAC Engineering and Contracting





## The Spot

Saida

Contractor: MAC Engineering and Contracting





Remhala 662  
Remhala - Aley



Yarzeh Pines  
Yarzeh - Baabda  
Contractor: HETC  
Consultant: Samir Khairallah & Partners



## Zahleh 1678

Zahleh-Bekaa

Architect: Joseph Joani



## Bsalim 683

Bsalim-Metn





# PRODUCTS



RCN<sup>®</sup> Innovation  
in Aluminium  
Systems.

**STACBOND**



## SECTION

# C



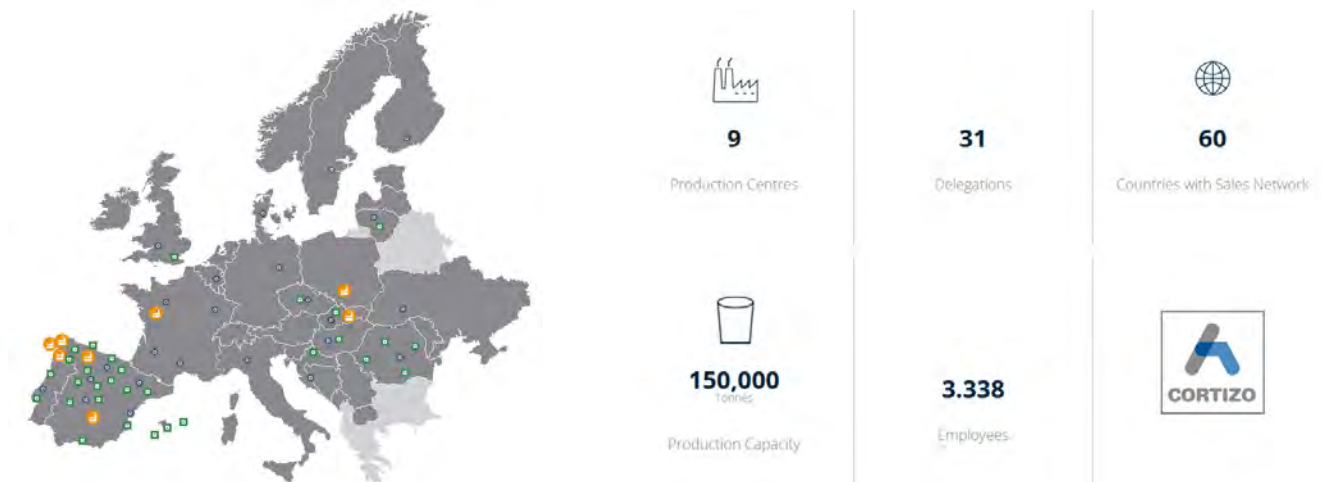
C-01





Cortizo stands out for completing the whole manufacturing cycle of aluminum: foundry, extrusion, powder coating, anodizing, chemical brightening, CNC machining, packaging, storage and distribution. CORTIZO, is known for being the first manufacturer and distributor of aluminum and PVC systems for the architecture and industry sectors in Spain, as well as one of the sector's leading companies in Europe.

Design, innovation and quality are a common denominator in all of our more than 50 systems of windows, doors, facades, composite panel, railings and solar protection systems designed by our R & D & I department. CORTIZO systems are adjustable to any type of project: single-family and collective housing, health, industrial, offices..., any type of building!



The CORTIZO Technology Center is dedicated exclusively to research, development and innovation in the building system sector, serving to more than 30 countries. With a total area of 3,175 m<sup>2</sup>, this pioneering center in Europe has the most modern and complete laboratory of tests of the sector, integrated by 8 test banks in which we are able to test and certify the properties of more than our 50 exclusive CORTIZO systems.

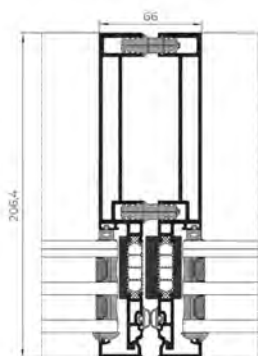
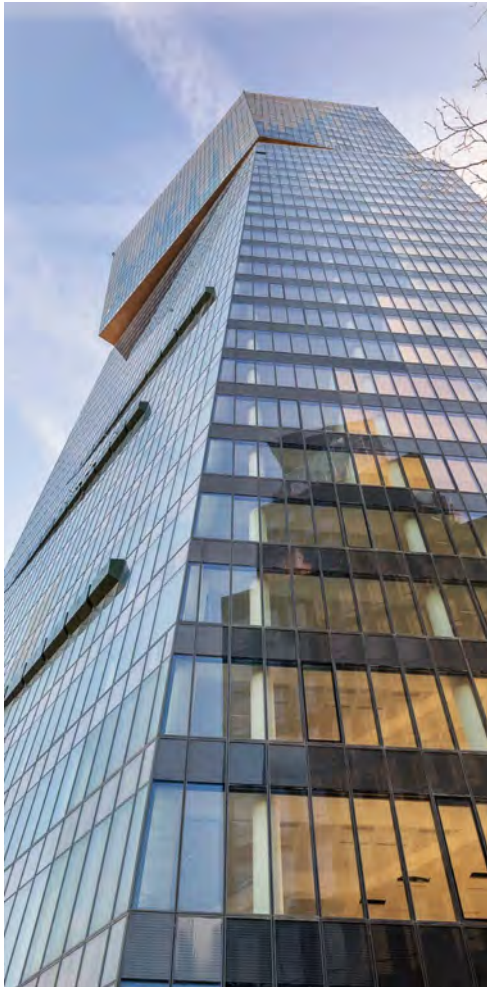




## Unit 66 Modular Façade

Unitized Thermally broken façade system suitable for high rise enclosure projects. This solution combines excellent performance with a wide range of custom designs.

- Transmittance:  $U_{cw}$  from 0,6 ( $W/m^2K$ )







• Transmittance:  $U_{cw}$  from 0,6 (W/m<sup>2</sup>K)

### TP-52 Façade

Fully captured façade system with a wide variety of mullions and transoms that solve the different aesthetic and constructive needs of the architectonic sector.



### TPH-52 Façade

Mixed system that evolved from the combination of the TP-52 and the SG-52 systems. This system highlights for its horizontal lines.



### TPV-52 Façade

Mixed system that evolved from the combination of the TP-52 and the SG-52 systems. This system highlights for its vertical lines.

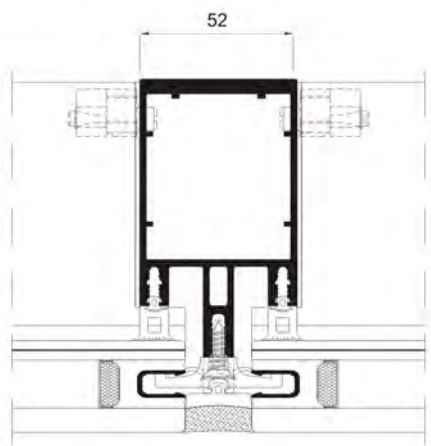




## SG-52 Façade

"Glass only" façade system with a wide variety of mullions and transoms that solve the different aesthetic and constructive needs of the architectonic sector.

• Transmittance:  $U_{cw}$  from 0,6 (W/m<sup>2</sup>K)





## Skylight Veranda

This skylight system allows for an easy integration of our veranda systems, our hinged windows or our sliding window/door systems with an internal section of 52 mm. It allows the possibility of adding a motorized top hung projecting opening in roof areas.

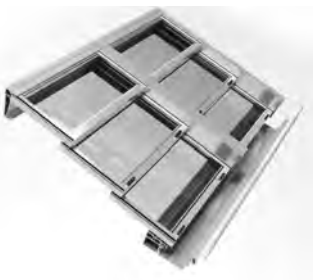
• *Transmittance: Ucw from 0,6 (W/m<sup>2</sup>K)*



## Sliding Roof

Combination of styles, robustness, convenience and great performance. Maximum opening possibility of 66% of the surface area. This system provides good ventilation and allows for a total entry of light from above. It has all types of complementary profiles to facilitate water collection and drainage that guarantee total water tightness.

• *Maximum Weight: 75 kg*





### Equity Façade

Minimalist and slim look façade system with an internal seen section of just 18 mm.

• Transmittance:  $U_{cw}$  from 0,6 (W/m<sup>2</sup>K)





### Cor Vision Plus

Minimalist sliding system especially suitable for large dimensions which has a slim interlock of just 25 mm.

- Transmittance:  $U_w$  from 0,9 (W/m<sup>2</sup>K)
- Max weight/sash: 400 Kg Manual / 700 Kg Motorized
- Max acoustic insulation:  $R_w=43$  dB





### Cor Vision

Minimalist sliding system having a wide variety of typologies which has a slim interlock of just 20 mm.

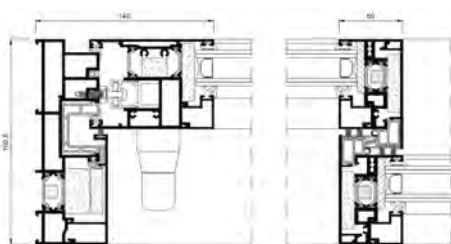
- Transmittance:  $U_w$  from 1,3 ( $W/m^2K$ )
- Maximum weight/sash: 320 Kg
- Maximum acoustic insulation:  $R_w=41$  dB



### Cor 4600 HI Lift & Slide

Lift and slide door system that exhibits the best performance with a possibility of 2 interlocks: 110mm (standard) and 50mm (minimalist solution).

- Transmittance:  $U_w$  from 0,9 ( $W/m^2K$ )
- Maximum weight/sash: 400 Kg
- Maximum acoustic insulation:  $R_w = 43$  dB





### Cor 4900 HI

Sliding window and door system with straight aesthetic which has a slim interlock of just 35 mm.

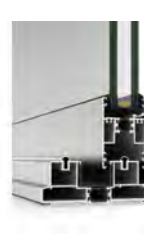
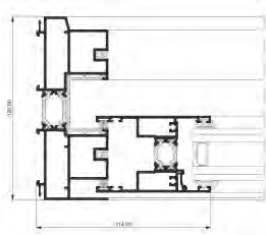
- Transmittance:  $U_w$  from 1,2 ( $W/m^2K$ )
- Maximum weight/sash: 240 Kg
- Maximum acoustic insulation:  $R_w = 40$  dB



### Cor 4700

Sliding window and door system with straight aesthetic stainless steel rails that allow ultra smooth sliding.

- Transmittance:  $U_w$  from 1,1 ( $W/m^2K$ )
- Maximum weight/sash: 280 Kg
- Maximum acoustic insulation:  $R_w = 40$  dB

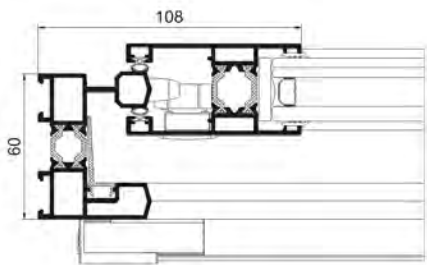




### Cor 4200

A versatile sliding system with a thermal bridge.

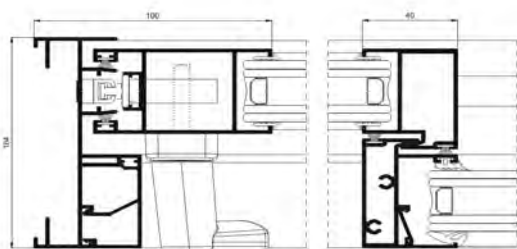
- Transmittance:  $U_w$  from 1,5 ( $W/m^2K$ )
- Maximum weight/sash: 200 Kg
- Maximum acoustic insulation:  $R_w = 39$  dB



### Cor 6500 - 6500 Plus

Non-Thermal sliding window system with more glazing capacity and reduced central sash of only 40mm per section.

- Transmittance:  $U_w$  from 2,2 ( $W/m^2K$ )
- Maximum weight/sash: 240 Kg
- Maximum acoustic insulation:  $R_w = 36$  dB



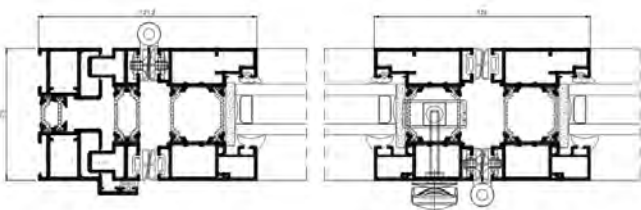


## Doors Systems

### BI-Fold

This bi-fold door system separates environments and unifies spaces with with an 80 mm deep frame. This evolution of the Bi-fold series offers an excellent thermal and acoustic performance.

- Transmittance:  $U_w$  from 0.8 (W/m<sup>2</sup>K)
- Maximum weight/sash: 120 Kg
- Security test PAS24
- 50.000 cycles (Main swing door)
- 25.000 cycles (Sashes)



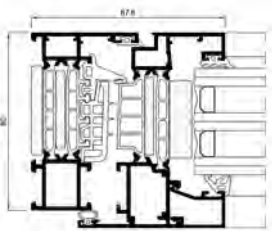


## Hinged Systems

### Cor 80 Industrial

Hinged system that responds to the most severe climatic requirements thanks to its thermal break with 45 mm tubular polyamide strips.

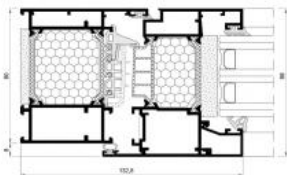
- Transmittance:  $Uw \geq 0.8$  (W/m<sup>2</sup>K)
- Maximum weight/sash: 160 Kg
- Maximum acoustic insulation:  $Rw$  up to 46 dB



### COR 80 Industrial Passivhaus TB

Certified for the warm-temperate category, this system offers exceptional thermal insulation thanks to its special foams on the frame and sash. With a transmittance value  $Uw$  from just 0.66 W/m<sup>2</sup>K, it is an ideal solution for buildings with low energy consumption.

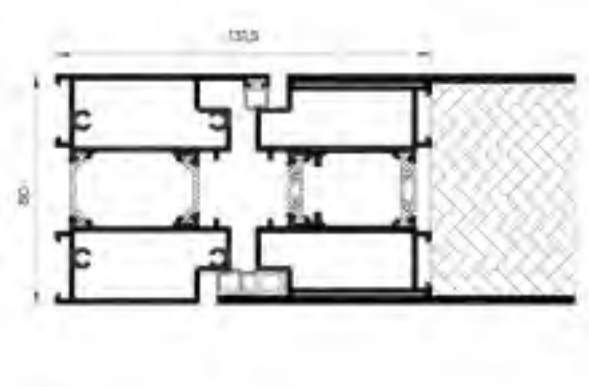
- Transmittance:  $Uw \geq 0.66$  (W/m<sup>2</sup>K)





## Millennium Plus Pivot Door

This new entrance door from CORTIZO answers the latest design trends . The system is designed to allow large pivot openings suitable for contemporary architectural projects, and it offers excellent thermal and acoustic performance along with minimalistic sightlines.



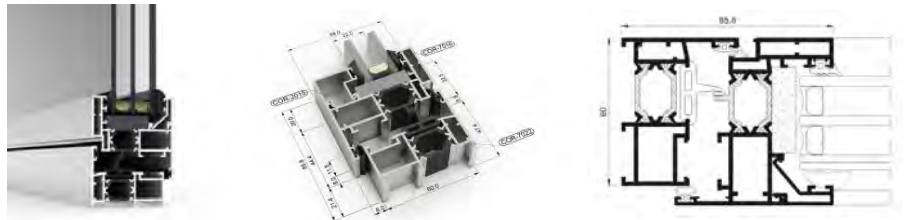


# Hinged Systems

## Cor 60

Hinged system with 60 mm of frame depth, featuring 24 mm polyamide strips, which provides a notable thermal and acoustic comfort.

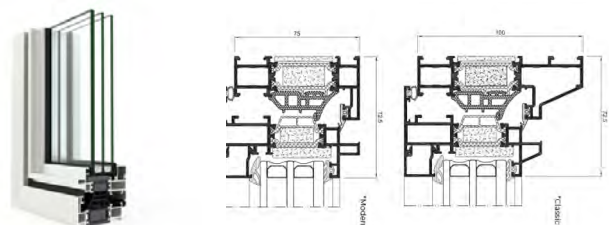
- Transmittance:  $Uw \geq 1.0$  (W/m<sup>2</sup>K)
- Maximum weight/sash: 160 Kg
- Acoustic insulation:  $Rw$  up to 48 dB



## Alu-Steel

Inspired by classic line designs, this new system allows to combine aluminum outstanding performance values with a steel-alike appearance.

- Transmittance:  $Uw \geq 0,83$  (W/m<sup>2</sup>K)
- Maximum weight/sash: 160 Kg

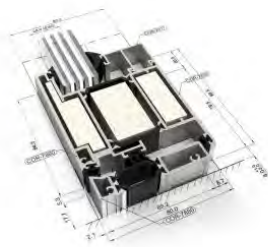
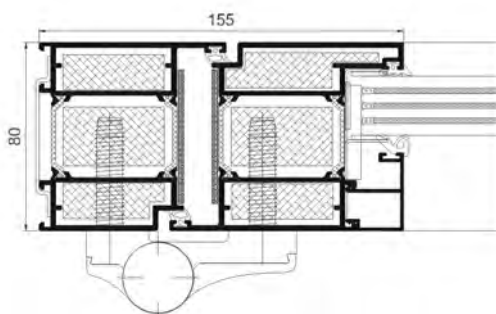




### Millennium FR

Fire resistant door system of category EI60 having Retardant insulation materials that do not combust in the profile chambers.

- Transmittance:  $U_w$  from 1.4 ( $W/m^2K$ )
- Maximum weight/sash: 240 Kg
- Acoustic insulation:  $R_w = 38$  dB



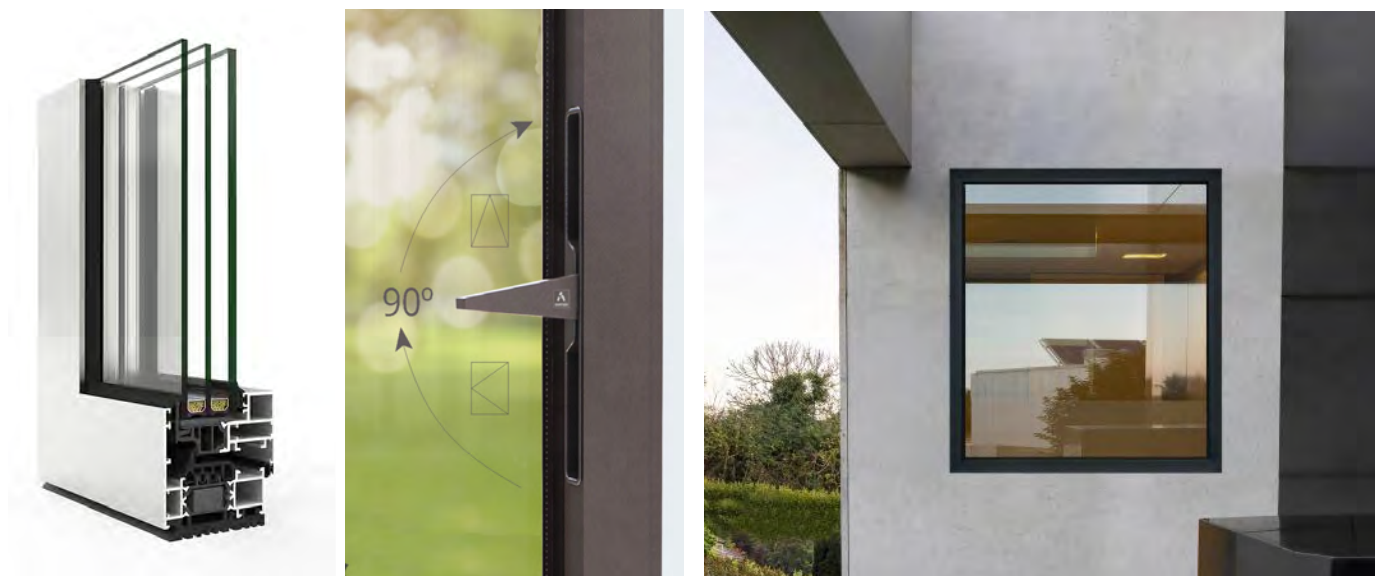


# Hinged Systems

## Cor 70 Hidden Sash (Invisible Arch)

Hinged system that minimizes the aesthetic impact of the window components with the incorporation of the arch invisible handle, concealed hinges and the drainage solution.

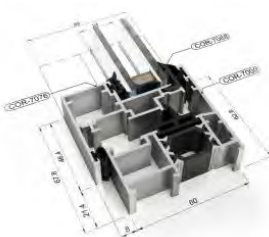
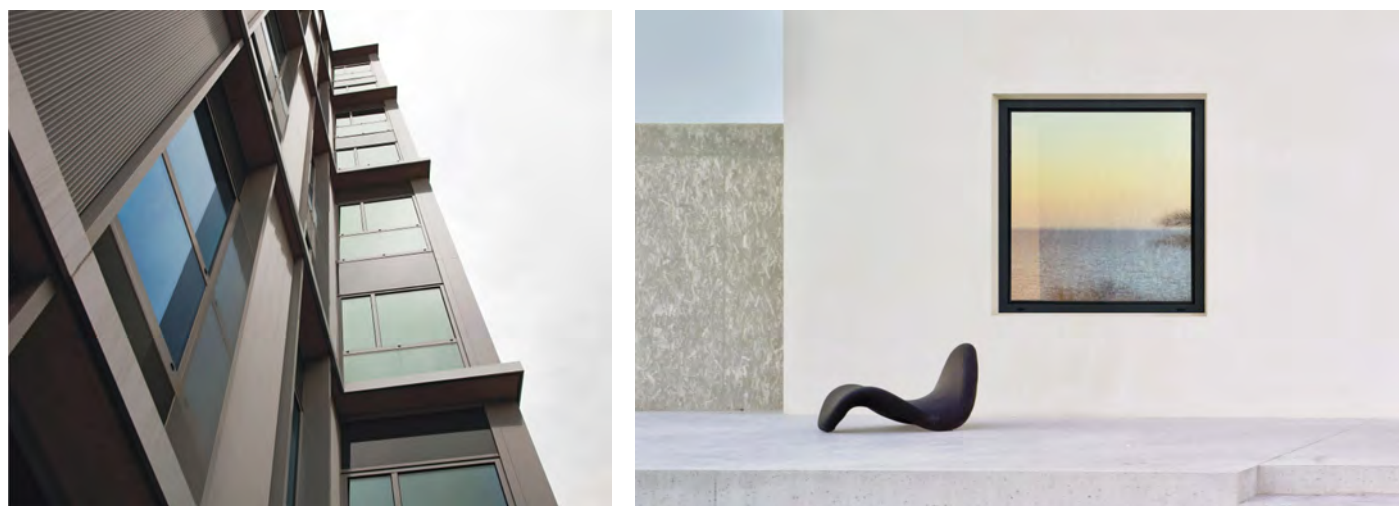
- Transmittance:  $U_w \geq 1.0 \text{ (W/m}^2\text{K)}$
- Maximum weight/sash: 160 Kg
- Acoustic insulation:  $R_w$  up to 46 dB



## Cor 60 Hidden Sash

Hinged system that allows for more glazed surface with minimal avant-garde projects.

- *Transmittance:  $U_w \geq 1.5$  (W/m<sup>2</sup>K)*
- *Maximum weight/sash: 160 Kg*
- *Acoustic insulation:  $R_w$  up to 41 dB*

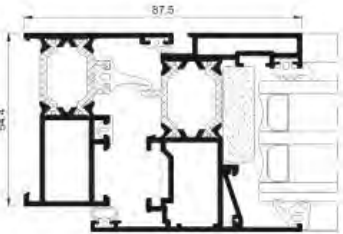
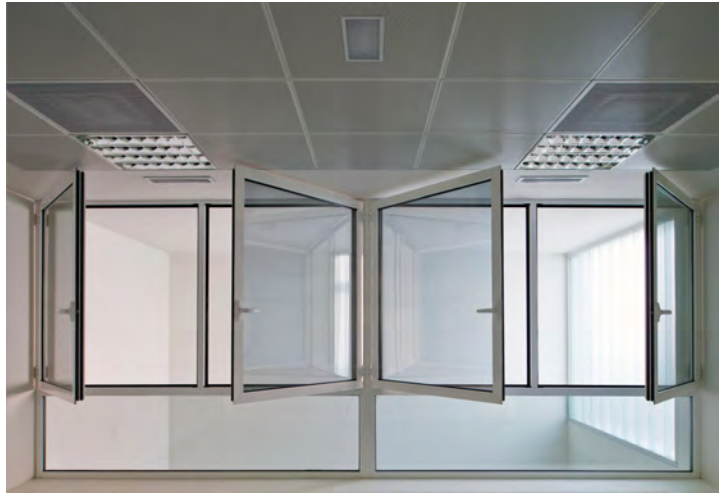
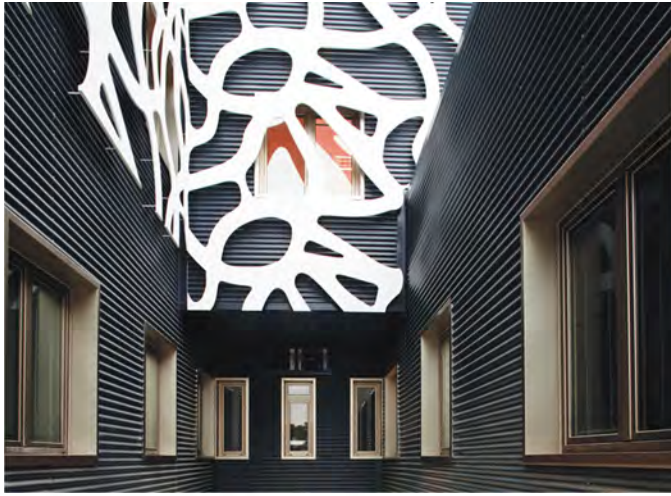




## Hinged Systems

### Cor 3500

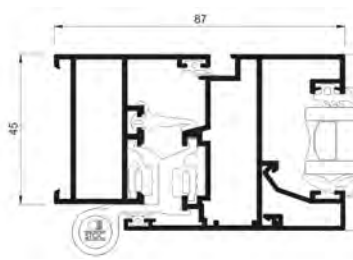
Hinged system with a frame depth of 54 mm, a 24 mm thermal break zone, and a maximum glazing capacity of 41 mm. These features grant this system optimal thermal and acoustic performances:  $U_w$  from  $1.0 \text{ W/m}^2\text{K}$ , and up to 46 dB of noise reduction



### Cor 2000

Non-thermal hinged system with exceptional rigidity and durability.

- Transmittance:  $U_w \geq 1.8 \text{ (W/m}^2\text{K)}$
- Maximum weight/sash: 120 Kg
- Acoustic insulation:  $R_w$  up to 39 dB





# Internal Partitions

## PW80 Office Partition Wall

Designed to divide interior spaces, available in glass and panel version. This solution allows the integration of side hung doors and Venetian blinds.

• *Maximum acoustic insulation: Rw up to 48 dB*





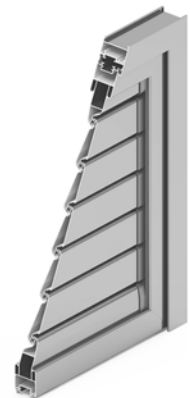
### Mallorquina

Traditional hinged shutter system with a possibility of adjustable strips.



### Tamiz

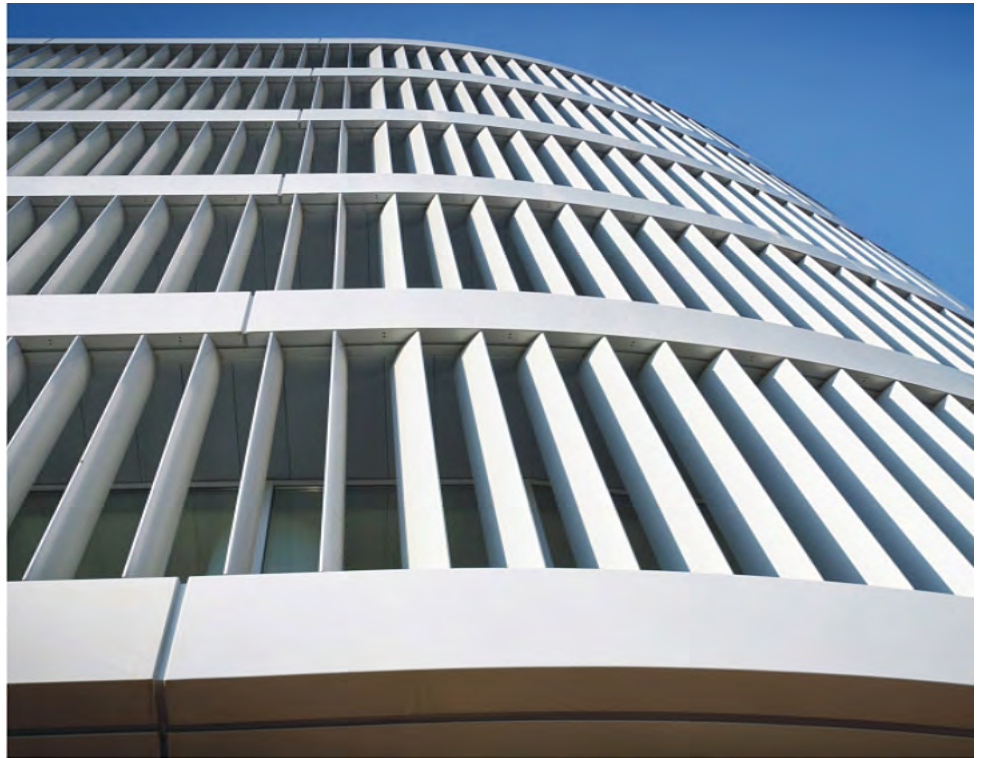
Allows for sliding and folding shutter systems.





## Solar Protection Louvres

A system, that allows the light to be regulated by creating shaded zones which reduces the need for energy.



## Decorative Louvres

Extruded aluminum decorative louvres.

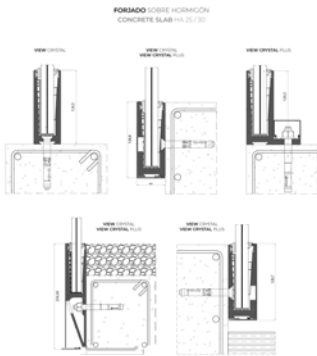




## Balustrade System

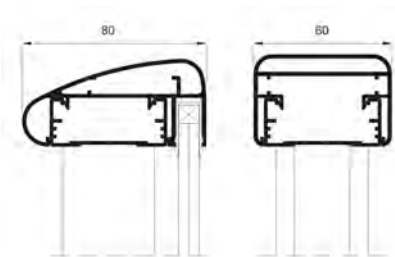
### View Crystal Balustrade

Minimal Balustrade system with a state of art design.



### Classic Balustrade

Minimal Balustrade system with a state of art design.



### Juliet balcony

Complimentary Solution bound to be placed using concealed Fixing





### Handles



Standard  
Handle



Minimalistic  
Handle



Offset  
Handle



Cremone  
with key



Extractable  
Cremone



**Evo Soft Hardware**  
(Standard / CLX 160 KG / Security)



Lift & slide  
handle



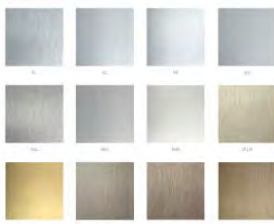
Vision Security  
Locking System



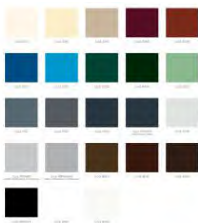
Hinges HD

## Finishes

### Anodizing



### Powder Coating



### Arch Invisible





RCN-Innovation in Aluminum Systems, Lda is a company dedicated to the creation, development, production and installation of minimalist aluminum systems for architecture, innovative in design and functionality.

In 2016, it presented the brand of minimalist systems EXPansion to the market. The functional design and reliability of the solutions presented by the EXPansion minimalist systems, allow you to be present in 21 countries in 2020 and have more than 500 completed projects already being a reference in the national and international market.



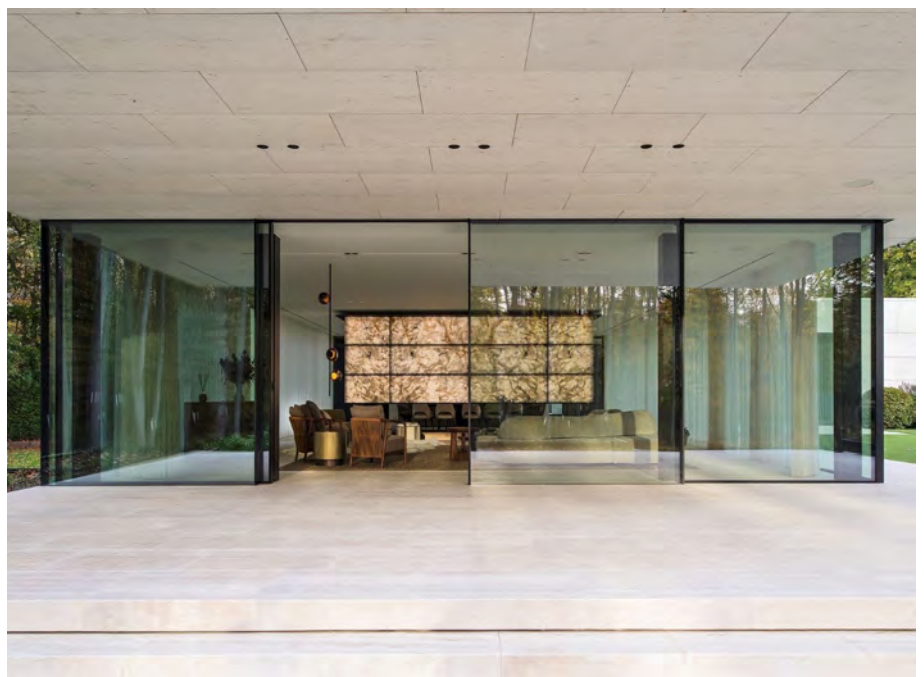
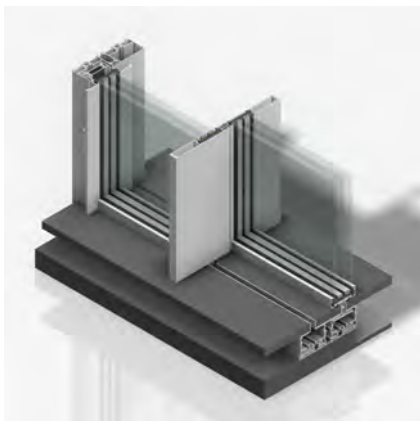


## Minimal Sliding Façade

### EXP 54 HR

A premium minimal sliding system for extra large dimensions.

- Thermal Insulation: 0.8-1.2 (w/m<sup>2</sup>k)
- Acoustic Insulation: Up to 41 dB
- Maximum weight / Leaf: 1000 kg
- Maximum height / Leaf: 6000mm
- Maximum Area / Leaf: 18m<sup>2</sup>





## Minimal Pivot Door

### EXP-P

A minimal pivoting door suitable for large dimensions.

- Thermal Insulation: 1.0-1.7 (w/m<sup>2</sup>k)
- Acoustic Insulation: Up to 41 dB
- Maximum weight / Leaf: 500 kg
- Maximum height / Leaf: 5000mm
- Maximum Area / Leaf: 10m<sup>2</sup>



## Vertical Slider

### EXP G

A vertical upright sliding system.

- Thermal Insulation: 1.0-1.7 (w/m<sup>2</sup>k)
- Acoustic Insulation: Up to 41 dB
- Maximum weight / Leaf: 600 kg
- Maximum height / Leaf: 5000mm
- Maximum Area / Leaf: 12m<sup>2</sup>





# STACBOND

Sistemas Técnicos del Accesorio y Componentes S.L. (STAC®) is a company specialising in solutions for building envelopes and facades. For more than 18 years STAC® products have been selected by architects, developers and builders all over the world thanks to their quality, commitment and guarantee. This extensive geographical coverage has enriched our product range.

The choice of STAC® products is synonymous with leading edge design, optimum performance and reliability, offered only by market-leading companies.



## STAC

Design and manufacture of architectural products



Outreach  
**70 countries**



R+D+I  
**6 technical offices**



Specialisation  
**80 engineers**



Internationalisation  
**5 delegations**



Infrastructure  
**120,000 m²**



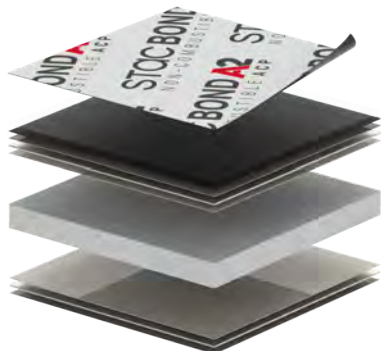
Staff  
**+500 employees**





#### STACBOND A2 (Non Combustible)

Non Combustible composite panel with a mineral core that meets the highest fire classification standards.



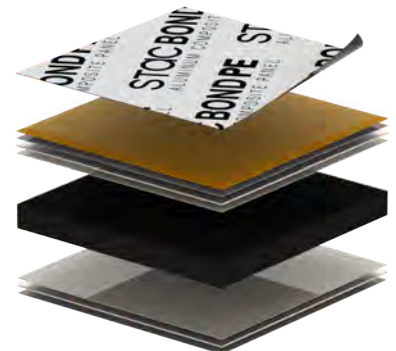
#### STACBOND FR ( Fire Retardant)

Fire retardant composite panel with a thermoplastic core with a mineral charge.



#### STACBOND PE

Aluminum Composite panel with a polyethylene core that stands out for its lightness and ease of transformation.





## Featured Suppliers



**STACBOND**

## Other Suppliers





# REFERENCES

SECTION

D



## Reference List

### Consultants

- MAF
- DG Jones & Partners
- APAVE
- Samir Khairallah and Partners
- Rafik El-Khoury and Partners

### Contractors

- Khoury Engineering & General Contracting
- BUTEC
- MAC Engineering & Contracting
- Ashada SAL
- Anelina Work
- Wasamat Real Estate
- Hamad Aboul Hosn & Co
- Group 4 Engineering
- MNA International
- Manaf Trading & Contracting Co. S.A.R.L
- Brighter Homes

### Architects

- Fouad Samara Architects
- Stephanie Feghali Sawan Studio
- SOMA Architects
- Jean Claude malhame
- Henry Franjeh Architects
- DAZ Architects
- Fadel Dagher Architects  
(Dagher Hanna & Partners Architects)
- Jad Abi Fadel
- Ronass Design
- Akram Shayya Architects
- Riad Abou Ghannam Architects
- Wassim Kaddoum Architects
- Abdallah Al Massih
- Joseph Joany Architects
- Nouhad Al Hachem
- Next Studio
- L.E.F.T. Architects

### Developers

- Dareen Intl CO S.A.R.L.
- APCO
- AIMS Holding
- HETC
- Rise Properties
- Zardman
- Alfa Tower
- JN Real Estate
- Mr. Robert Mansour
- Mr. Gilbert Abou Monsef
- Mr. Joseph Saliba
- Mr. Fouad Jawhari
- Mr. Milad Abi Saad
- Mr. Adnan Jazi
- Eng. Elie Zeinoun



ISOTECH CO.  
Aluminum & Glass



# CERTIFICATIONS

## SECTION

# E





BUREAU  
VERITAS

# Bureau Veritas Certification

## ISOTECH CO

ISOTECH BUILDING, MAIN STREET, QORNAYEL, BAABDA - LEBANON

*Bureau Veritas Certification Holding SAS – UK Branch certifies that the Management System of the above organisation has been audited and found to be in accordance with the requirements of the management system standards detailed below*

## ISO 9001:2015

*Scope of certification*

**DESIGN, FABRICATION, ASSEMBLY AND INSTALLATION OF ALUMINUM GLASS AND METAL WORKS**

Original cycle start date:	10-06-2021				
Expiry date of previous cycle:	NA				
Certification / Recertification Audit date:	15-05-2021				
Certification / Recertification cycle start date:	10-06-2021				
Subject to the continued satisfactory operation of the organization's Management System, this certificate expires on:	09-06-2024				
Certificate No.:	LB001902	Version:	1	Issue Date:	10-06-2021



0008

*Certification Body Address: 5th Floor, 66 Prescott Street, London, E1 8HG, United Kingdom*

*Local Office: Bureau Veritas Liban SAL - Dedeyan Center 9th Floor - Dora - Lebanon*

Further clarifications regarding the scope and validity of this certificate, and the applicability of the management system requirements, please call: 961 1 240540/640







BUREAU  
VERITAS

# Bureau Veritas Certification

## ISOTECH CO

ISOTECH BUILDING, MAIN STREET, QORNAYEL, BAABDA - LEBANON

*Bureau Veritas Certification Holding SAS – UK Branch certifies that the Management System of the above organisation has been audited and found to be in accordance with the requirements of the management system standards detailed below*

### ISO 45001:2018

*Scope of certification*

**DESIGN, FABRICATION, ASSEMBLY AND INSTALLATION OF ALUMINUM GLASS AND METAL WORKS**

Original cycle start date:	27-05-2022
Expiry date of previous cycle:	NA
Certification / Recertification Audit date:	07-03-2022
Certification / Recertification cycle start date:	27-05-2022
Subject to the continued satisfactory operation of the organization's Management System, this certificate expires on:	26-05-2025
Certificate No.:	LB002025
Version:	1
Issue date:	27-05-2022



0008

*Certification Body Address: 5th Floor, 66 Prescott Street, London, E1 8HG, United Kingdom*

*Local Office: Bureau Veritas Liban SAL - Dedeyan Center 9th Floor - Dora - Lebanon*

Further clarifications regarding the scope and validity of this certificate, and the applicability of the management system requirements, please call: 961 1 240540/640





BUREAU  
VERITAS

# Bureau Veritas Certification

## ISOTECH CO

ISOTECH BUILDING, MAIN STREET, QORNAYEL, BAABDA - LEBANON

*Bureau Veritas Certification Holding SAS – UK Branch certifies that the Management System of the above organisation has been audited and found to be in accordance with the requirements of the management system standards detailed below*

### ISO 14001:2015

*Scope of certification*

**DESIGN, FABRICATION, ASSEMBLY AND INSTALLATION OF ALUMINUM GLASS AND METAL WORKS**

Original cycle start date:	27-05-2022				
Expiry date of previous cycle:	NA				
Certification / Recertification Audit date:	07-03-2022				
Certification / Recertification cycle start date:	27-05-2022				
Subject to the continued satisfactory operation of the organization's Management System, this certificate expires on:	26-05-2025				
Certificate No.:	LB002024	Version:	1	Issue date:	27-05-2022

*halla*



0008

*Certification Body Address: 5th Floor, 66 Prescott Street, London, E1 8HG, United Kingdom*

*Local Office: Bureau Veritas Liban SAL - Dedeyan Center 9th Floor - Dora - Lebanon*

Further clarifications regarding the scope and validity of this certificate, and the applicability of the management system requirements, please call: 961 1 240540/640







## OFFICIAL INSTALLER CREDENTIAL

### ISOTECH CO

Cortizo hereby certifies that this Company has been validated and appointed  
as OFFICIAL INSTALLER of our systems by meeting our quality requirements.

OFFICIAL INSTALLER



# ATTACHMENTS

SECTION

F





٧٠٣٥٠٧٦٦٥٧

الرقم المودع :  
رقم المنشأة :  
التاريخ : ١٤٤٤/٠٩/٠٤ هـ

## شهادة تسجيل الشركة Company Registration Certificate



الاسم التجاري للشركة : شركة ايزو تيك الصناعية  
نوعها : ذات مسؤولية محدودة مختلطة

مدة الشركة : ١١١١، ١١١١  
مركزها الرئيسي : ١١١١١

تبدأ من : ١٤٤٤/٠٩/٠٤ هـ

جنسيتها : سعودي

وتنتهي في :

هاتف :  
الرمز البريدي : ١١١١١  
النشاط : للاطلاع على بيانات الأنشطة الرجاء مسح الرمز التجاري

ص. ب :

شركة ايزو تيك الصناعية



السجل التجاري : 1010871035

رأس المال : ١٥٠,٠٠٠ ريال سعودي

المديرون : 1 علاء وجدي الأعرور

2 3 4 5 6 7 8 9 10 11 12 13 14 15 16

سلطات المدير/المديرون : حسب ما نص عليه عقد الشركة

يشهد مكتب السجل التجاري بمدينة : الرياض  
وتنتهي صلاحية الشهادات في : ١٤٤٥/٠٩/٠٤ هـ

بأنه تم تسجيل الشركة المذكورة أعلاه بمدينة : الرياض  
بموجب الإيصال رقم : ٣٣٢٣١٦٥  
وتاريخ : ١٤٤٤/٠٩/٠٤ هـ





## وزارة الاستثمار Ministry of Investment

### ترخيص استثمار صناعي Industrial Investment License

رقم المنشأة (60105520)  
رقم الترخيص (101034407190648)  
تاريخ الإنهاء تاريخ الإصدار  
1445/07/24 هـ 1444/07/25 هـ  
2024/02/04 م 2023/02/16 م



193715

المركز الرئيسي

حالة الترخيص: تعديل

أيزو تيك

اسم الترخيص

الكيان القانوني

شركة ذات مسؤولية محدودة

إجمالي التمويل (150,000) ريال سعودي

(25 فرد)

عدد العمالة

الرياض

الحصة

رقم المستثمر الأجنبية

اسم صاحب/ أصحاب الترخيص

الحصة

رقم المستثمر الأجنبية

لبنان

60105521

اسم صاحب/ أصحاب الترخيص

أيزو تك

50%

المملكة العربية السعودية

مؤسسة واو أربعة للمقاولات العامة

50%

لبنان

60105521

اسم صاحب/ أصحاب الترخيص

أيزو تك

ISO TECH

الوحدة

الكمية

البلد الجمركي المنتج

الوحدة

الكمية

البلد الجمركي المنتج

النشاط:

صناعة وتركيب أبواب الكراجات

251153

صناعة وتركيب النوافذ والأبواب

251154

صناعة وتركيب المظلات

251156

يمكنك التحقق من صحة وصلاحيّة الشهادة عبر زيارة الرابط  
<https://investaudi.sa/en/verify> على موقع وزارة الاستثمار.



تاريخ الطباعة 1444/08/12 م





TIN 3116713757 الرقم المميز  
Certificate No. 100231080710491 رقم الشهادة  
Certificate date 08/06/2023 تاريخ الشهادة



هيئة الزكاة والضريبة والجمارك  
Zakat, Tax and Customs Authority

المملكة العربية السعودية  
Kingdom of Saudi Arabia

## شهادة تسجيل في ضريبة القيمة المضافة VAT Registration Certificate

تشهد هيئة الزكاة والضريبة والجمارك بأن المكلف أدناه مسجل في ضريبة القيمة المضافة بتاريخ ٠٨/٠٦/٢٠٢٣ م  
The Zakat, Tax and Customs Authority certifies that taxpayer below is VAT registered on 08/06/2023 AD

Taxpayer Name	شركة ايزو تيك الصناعية	اسم المكلف
VAT Registration Number	311671375700003	رقم التسجيل الضريبي
Effective Registration Date	2023/07/01	تاريخ نفاذ التسجيل
Taxpayer Address	الرياض، السلي، شارع الحمراء، 14275	عنوان المكلف
CR / License	1010871035	رقم السجل التجاري
Contact / ID No		/ الرخصة / العقد / الهوية
Tax Period	ربع سنوي - Quarterly	الفترة الضريبية
First Filing due date	2023/10/31	تاريخ استحقاق أول إقرار ضريبي

**ملاحظة:** كمكلفين مسجلين في ضريبة القيمة المضافة، لا يجوز لكم تحصيل ضريبة القيمة المضافة من عملائكم قبل تاريخ نفاذ التسجيل في الضريبة. وفي حال تبين غير ذلك ستقوم هيئة الزكاة والضريبة والجمارك بتنفيذ الغرامات المستحقة

**Note:** As a VAT registered taxpayer, you are not allowed to collect VAT from your customers prior to the effective date of the tax registration. If otherwise approved, The ZAKAT, Tax and Customs Authority will impose the applicable penalties





102230004863412

TIN ٣١١٦٧١٣٧٥٧ الرقم المميز  
Certificate No. ١٠٢٢٣٠٠٠٤٨٦٣٤١٢ رقم الشهادة  
Certificate date هـ ١٤٤٤/١١/١٩ تاريخ الشهادة



هيئة الزكاة والضريبة والجمارك  
Zakat, Tax and Customs Authority

المملكة العربية السعودية  
Kingdom of Saudi Arabia

## شهادة تسجيل Registration Certificate

The Zakat, Tax and Customs

تشهد هيئة الزكاة والضريبة

Authority certifies that the Taxpayer

والجمارك أن المكلف /

شركة ايزو تيك الصناعية

Entity Unified No./ID No

٧٠٣٥٠٧٦٦٥٧

الرقم الموحد للمنشأة / رقم هوية

Commercial Registration/License/  
Contract No

١٠١٠٨٧١٠٣٥

سجل تجاري / رخصة / عقد رقم

Is registered on 04/09/1444 AH corresponding to 26/03/2023 AD

مسجل لديها بتاريخ ١٤٤٤/٠٩/٠٤ هـ الموافق ٢٠٢٣/٠٣/٢٦ م

(The Fourth of Ramadan one thousand four hundred forty-four Hijri)

( الرابع من رمضان ألف و أربعمئة و أربعة و أربعون هجري )

Was granted this certificate to complete all transactions except for the  
.final contract amounts due to him

وقد منح هذه الشهادة لإنهاء جميع معاملاته ما عدا صرف مستحقاته  
النهائية عن العقود.

يمكن التحقق من صلاحية الشهادة عبر موقع الهيئة [www.zatca.gov.sa](http://www.zatca.gov.sa)

The validity of the certificate can be verified via the Authority's Website [www.zatca.gov.sa](http://www.zatca.gov.sa)





## CONTACT INFORMATION

SECTION

G



# Contact Information

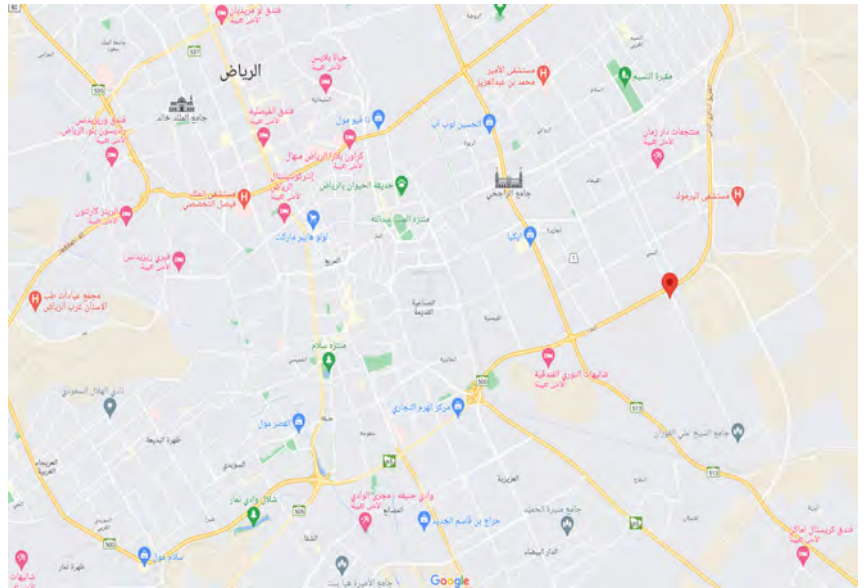


## Factory & Showroom:

Istanbul St., As Sulay,  
Riyadh P.O. Box: 14274  
Kingdom of Saudi Arabia

## Mobile:

+966 53 503 5839



## Factory & Showroom:

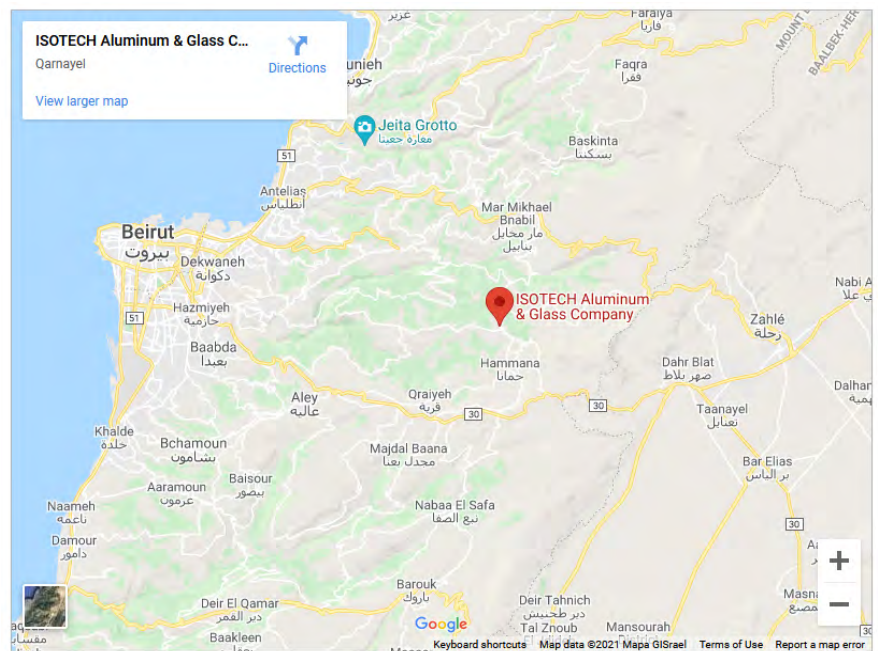
Qarnayel, Main Road  
Mount Lebanon, Lebanon.

## Mobile:

+961 70 868 904

## Phone/Fax:

+961 5 361 393 / 4



## E-Mail:

info@isotechco.com

## Website:

www.isotechco.com

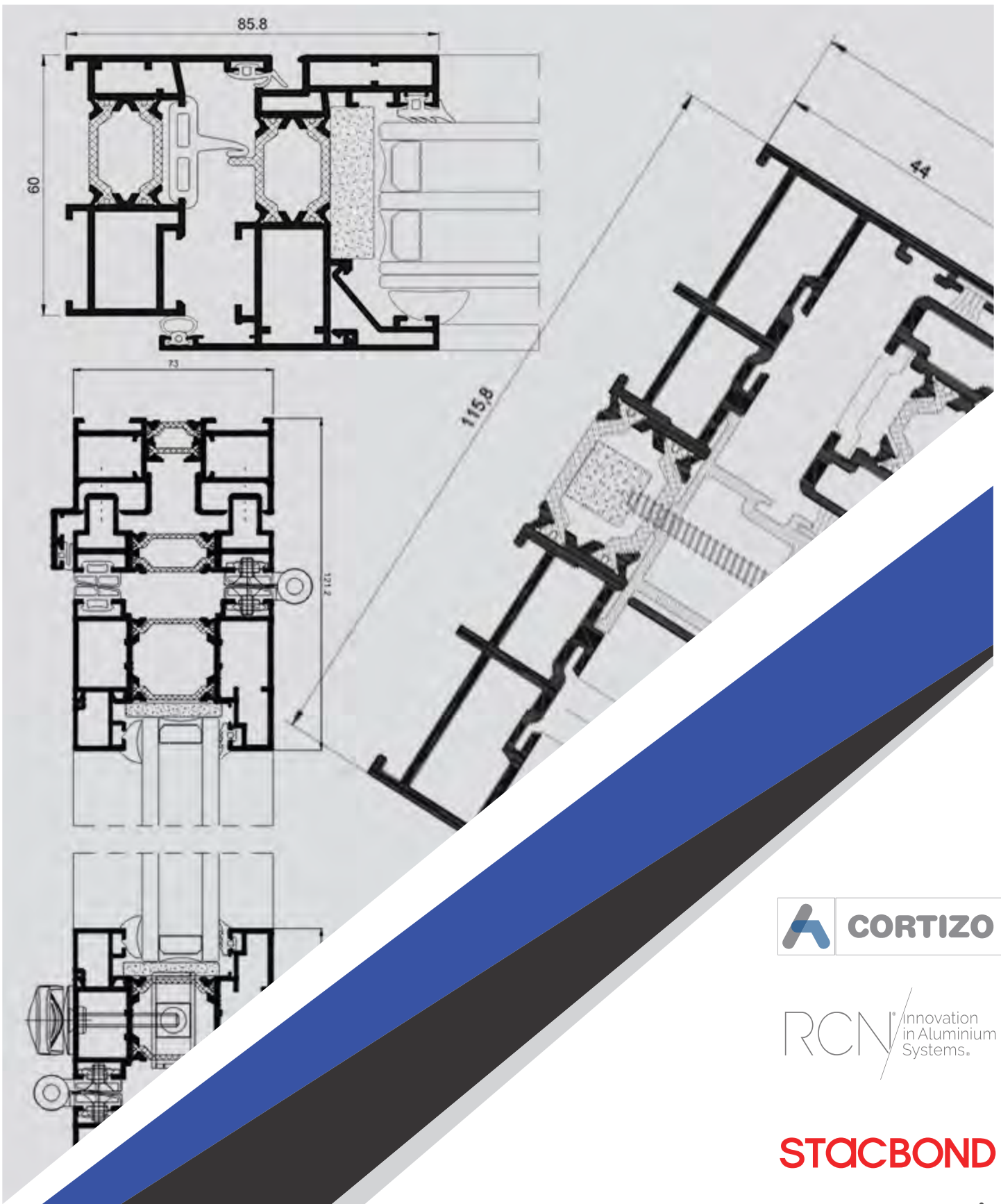
## Social Media

isotechlb

isotech\_co

isotech-co





**STACBOND**



شركة ايزوتيك الصناعية ش.م.م.  
**ISOTECH CO.**  
Aluminum & Glass

Istanbul St., As Sulay, Riyadh P.O. Box: 14274  
Kingdom of Saudi Arabia  
Mobile: +966 53 503 5839

Qornayel - Main Road, Baabda, Lebanon.

Mobile: +961 70 868 904  
Phone/Fax: +961 5 361 393 / 4

E-Mail: [info@isotechco.com](mailto:info@isotechco.com) • Website: [www.isotechco.com](http://www.isotechco.com)